

An Overview of Conservation Status Ranks

Lynn Kinter

Idaho Natural Heritage Program
Idaho Department of Fish and Game



Why rank?

~3200 native plant & lichen species in Idaho

Prioritize research efforts,
conservation actions



How?

Current Information + Objective Criteria → Rank

Info for many taxa:



Idaho organizations ranking rare plants

Idaho Natural Heritage Program & other state HPs

Idaho Native Plant Society

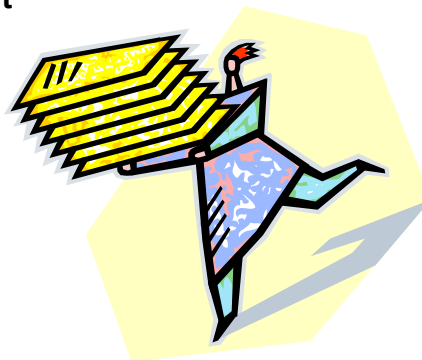
Fish and Wildlife Service

Bureau of Land Management

Forest Service Region 1

Forest Service Region 4

Forest Service Region 6



Idaho Natural Heritage Program, IDFG

- 330 taxa—all ranked by INPS, FWS, BLM, or FS
- updated as needed or funded
- uses data from INPS & others (e.g., EO reports)
- largely based on INPS ranks, but categories ≠
- could use NatureServe's 'rank calculator', if \$\$ permits



Taxa ranked at 2 levels:

Global—INHP or another state assigns

State (Subnational)—INHP assigns

X = extinct

H = only historic records, but hope for rediscovery

1 = critically imperiled; very high extinction risk; ≤5 sites

2 = imperiled; high extinction risk; 6-20 sites

3 = vulnerable; moderate extinction risk; 21-80 sites

4 = apparently secure; uncommon; >80 sites

5 = secure; common

Allium aaseae
Aase's onion = G3, S3



Bouteloua gracilis
blue grama = G5, S2

T ranks for subspecies or varieties, global level

E.g., *Botrychium lanceolatum* v. *lanceolatum*
lance-leaved moonwort
G5T4, S3



Idaho Native Plant Society

- 325 ranked taxa
- 119 'Review' taxa not ranked
- updated every 1-2 yrs
- uses input from members, evaluated somewhat subjectively
- taxa ranked at Global or State level, not both
- Global Priority taxa also receive a Threat Priority



Idaho Native Plant Society

Global Priority ranks—same as NatureServe; no 'H'

X = extinct

GP1 = critically imperiled; ≤5 sites

GP2 = imperiled; 6-20 sites

GP3 = vulnerable; 21-80 sites

For GP4 & 5 species that are “rare” in Idaho . . .

State Ranks:

Possibly extirpated = only records pre-1920

State Priority 1 = in danger of being extirpated from ID

State Priority 2 = likely a Priority 1 in foreseeable future

Sensitive = small or localized populations that don't meet Priority 1 or 2 criteria, but might be jeopardized

Monitor = common in a limited range; or uncommon but have no identifiable threats (e.g., certain alpine taxa)

Review = may be of concern, but insufficient data to classify

Crosswalk from INPS to INHP

GP1 = S1

GP2 = S1 or S2

GP3 = S1, S2, or S3

S1 = S1 or S2

S2 = S1 or S2

Sensitive = S2 or S3

Monitor = S3 or S4

Review = ignore

Threat Priorities for Global Priority taxa

<u>Taxonomy</u>	<u>Threat Magnitude</u>	<u>Threat Immediacy</u>
1 Monotypic genus	High	Imminent
2 Species	High	Imminent
3 Subspecies/Variety	High	Imminent
4 Monotypic genus	High	Non-imminent
5 Species	High	Non-imminent
6 Subspecies/Variety	High	Non-imminent
7 Monotypic genus	Low	Imminent
8 Species	Low	Imminent
9 Subspecies/Variety	Low	Imminent
10 Monotypic genus	Low	Non-imminent
11 Species	Low	Non-imminent
12 Subspecies/Variety	Low	Non-imminent

Fish & Wildlife Service

- 4 taxa, + 1 Candidate



Rod Gilbert

Fish & Wildlife Service

- 4 taxa, + 1 Candidate
- updated after “strict legal process”
- uses input from many, incl. INPS, public
- ranks taxa at National level:



Endangered = in danger of extinction

Threatened = likely to become endangered in foreseeable future

Candidate = enough information to warrant proposing for listing, but precluded from doing so by higher listing priorities

Bureau of Land Management

- 160 taxa (only on BLM lands)
- last updated 2003
- uses NatureServe, INPS & FWS ranks



“Type” categories:

1 = Endangered, Threatened, Candidate, Proposed

2 = Globally imperiled—G1-G3 & Threat 1-9

**3 = Globally Imperiled—G1-G3 & Threat 10-12
or INPS SP1, SP2, or Sensitive (most on BLM)**

4 = Species of Concern—INPS Sensitive, not Type 3

5 = Watch (not sensitive)—INPS Monitor & Review

Forest Service

- 124 taxa (only on FS lands)
- last updated 2005 (or 1994?)
- uses NatureServe & FWS ranks
- rank categories vary among regions



**Christ's paintbrush
*Castilleja christii***

- 1 site in ID; threatened by invasive species, ORVs, climate change

INHP: G1, S1

INPS: GP1, Threat 1

FWS: Candidate (1980)

BLM: na

FS, Reg 4: Sensitive

FS, Reg 1 & 6: na



Future considerations

INHP ranks ≠ INPS ranks, but cover same species

INPS ranks are subjective—repeatable? defensible?

INHP has an objective rank calculator, not used

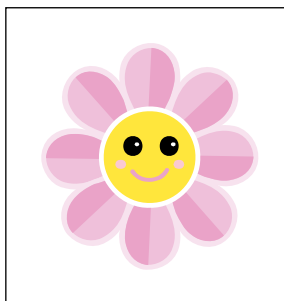
~1/2 of INPS taxa lack threat assessments—would be helpful for rank calculator

Future considerations

INPS 'Review' taxa largely ignored

***Penstemon laxus*, tufted beardtongue**

- known from a few ID counties
- NatureServe ranks G2



***Catapyrenium congestum*, lichen**

- known from a few ID counties
- NatureServe ranks G4



Future considerations

All lists based directly or indirectly on INPS ranks

Inclusion on INPS list depends on a 'champion' at RPC

RPC is largely a volunteer effort . . .

Hmmm, a fine specimen of *Pinus pipecleaneri*

Geez, another darn plant. When will we get to the lichens?

